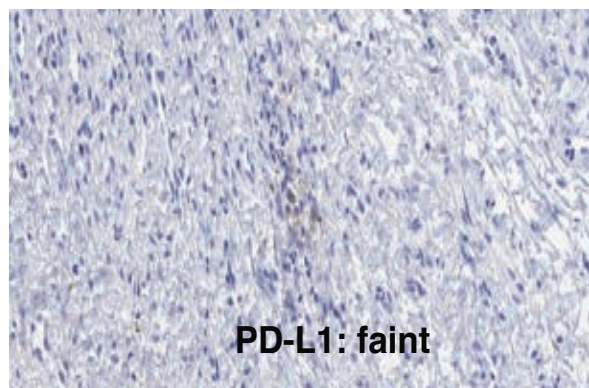
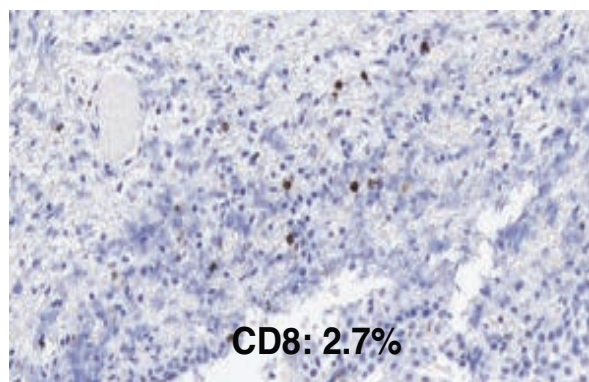
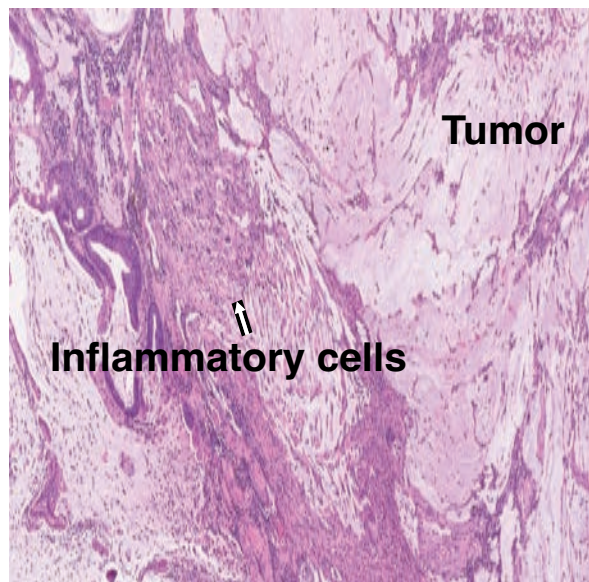
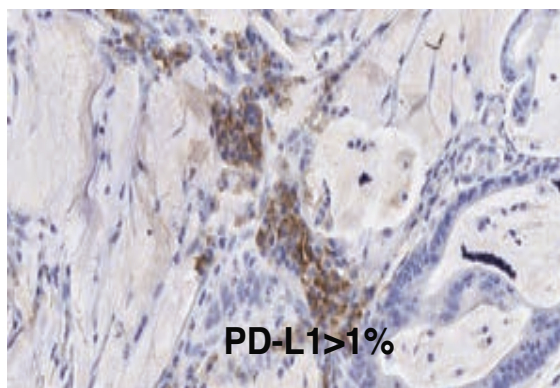
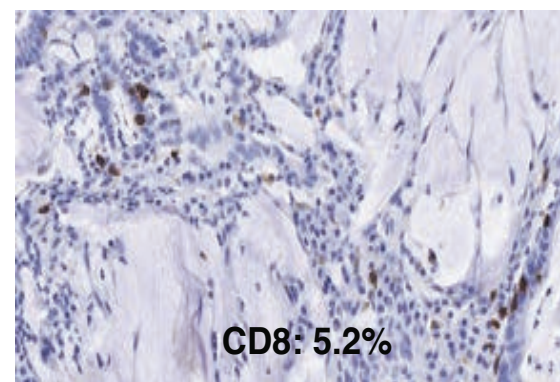


A**Baseline****B****Post-therapy**

Supplementary Figure. Fig.S1. Pathological complete remission in metastatic colorectal adenocarcinoma. (A) Baseline (hematoxylin-eosin, CD8 and PD-L1). (B) Post-nivolumab: no detectable tumor cells, increased inflammation, and increase in CD8 and PD-L1 expression. All IHC images are 100X.