

Supplementary Table

Supplementary Table S1. The primer sets used in Q-RT-PCR.

F: Forward primer; R: Reverse primer.

Gene	Forward primer ¹	Reverse primer ¹
<i>GAPDH</i>	ATCAAGAAGGTGGTGAAGCAG	TGTCGCTGTTGAAGTCAGAGG
<i>TLR3</i>	ATCCCTGAGCTGTCAAGCCA	GGGCACTGTCTTTGCAAGATG
<i>IFNα</i>	CAGTTCCAGAAGGCTCCAGC	TCCTCATCCCAAGCAGCAG
<i>IFNβ</i>	GGCAATTGAATGGAGGCT	GGCGTCCTCCTTCTGGAACT
<i>IFN-regulatory factor 5, IRF5</i>	TTCTCTCCTGGGCTGTCTCTG	CTATACAGCTAGGCCCCAGGG
<i>IFN-regulatory factor 7, IRF7</i>	GCAGCGTGAGGGTGTGTCTT	GCTCCATAAGGAAGCACTCGAT
<i>STAT1</i>	CTGCTGCGGTTCAGTGAGAG	GGTTCAACCGCATGGAAGTC
<i>OAS1</i>	TGAGGCCTGGCTGAATTACC	TGAATGGCAGGGAGGAAGC
¹ All primers have a 5'-3' orientation		

Supplementary Figure

Method:

RNA isolation and the Affymetrix microarray assays

Precrisis (PD 13-20) and immortal (PD >200) MDAH041 and MDAH087 fibroblast cell cultures were seeded at 3×10^5 per plate in regular culture medium. Cell cultures were treated with 1 μ M 5-aza-dC on days 1, 3, and 5 each time with a full media change. On day 6, the cells were returned to regular medium without 5-aza-dC. Total RNA was extracted on day 8 using the QIAGEN RNeasy. cRNA preparation and oligonucleotide analysis was performed by the Wayne State University Microarray Core facility in accordance with Affymetrix protocols. For each experiment, a separate microarray was performed using 2 or 3 independent RNA preparations.

Hierarchical clustering and multidimensional scaling

Hierarchical clustering and multidimensional scaling were performed as described previously [10, 43].

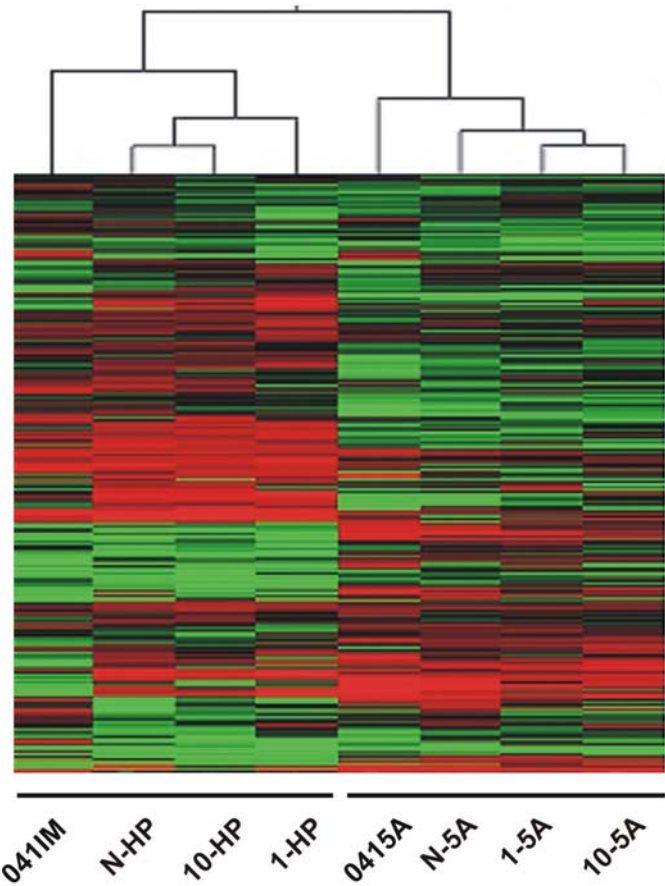
Figure Legend:

Supplemental Figure 1. Global profiling of ISG expression in immortal Li-Fraumeni fibroblast cells.

A. Hierarchical clustering analysis of IFN stimulated gene expression profile in immortal LFS cell lines. Each row represents a probe on the HGU95Av2®, each column represents the average comparisons of each immortal cell line with a precrisis cell line, or with 5-aza-dC treated immortal cells. Red color represents induced expression following immortalization or after 5-aza-dC treatment, and green color represents repressed expression. B. Multidimensional scaling analysis of IFN inducible gene expression profile in immortal MDAH041 and MDAH087 fibroblast cells. 041IM: immortal MDAH041 versus precrisis cells; N-HP: MDAH087-N versus precrisis cells; 1-HP: MDAH087-1 versus precrisis cells; 10-HP: MDAH087-10 versus precrisis cells; 0415A: 5aza-dC-treated versus untreated immortal MDAH041 cells; N-5A: 5aza-dC-treated versus untreated immortal MDAH087-N cells; 1-5A: 5aza-dC-treated versus untreated immortal MDAH087-1 cells; 10-5A: 5aza-dC-treated versus untreated immortal MDAH087-10 cells.

Supplementary Figure S1.

A.



B.

