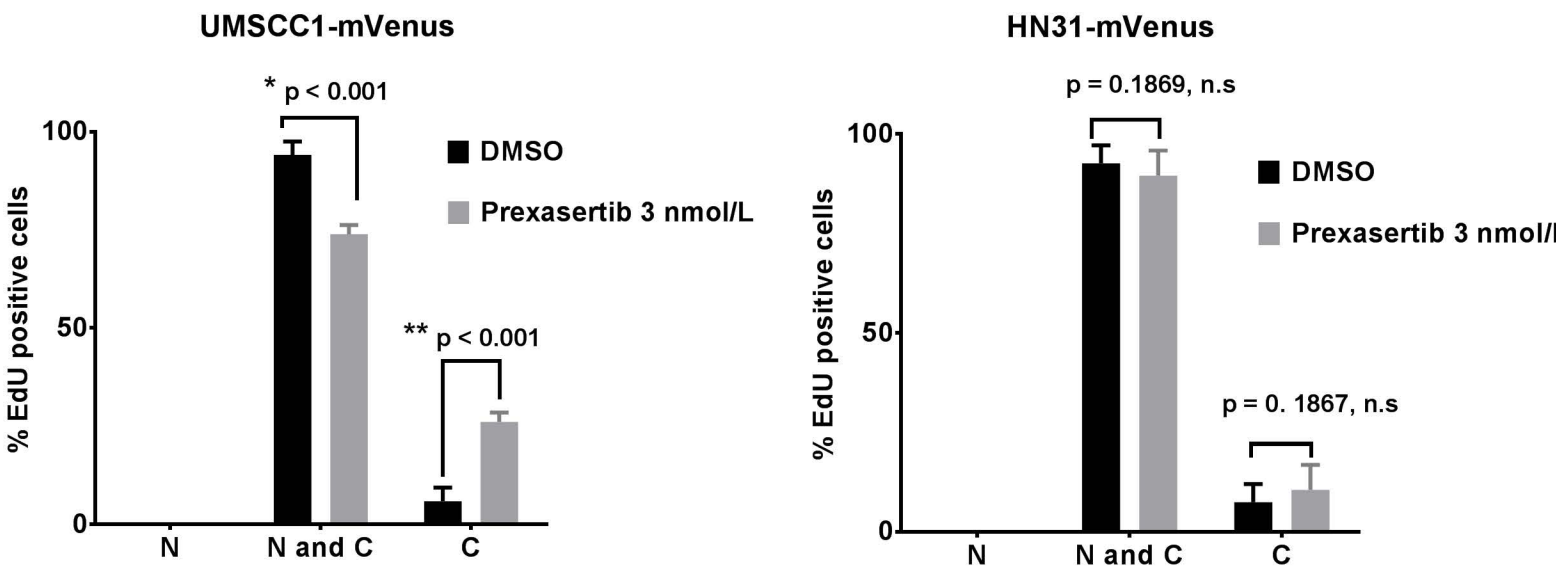
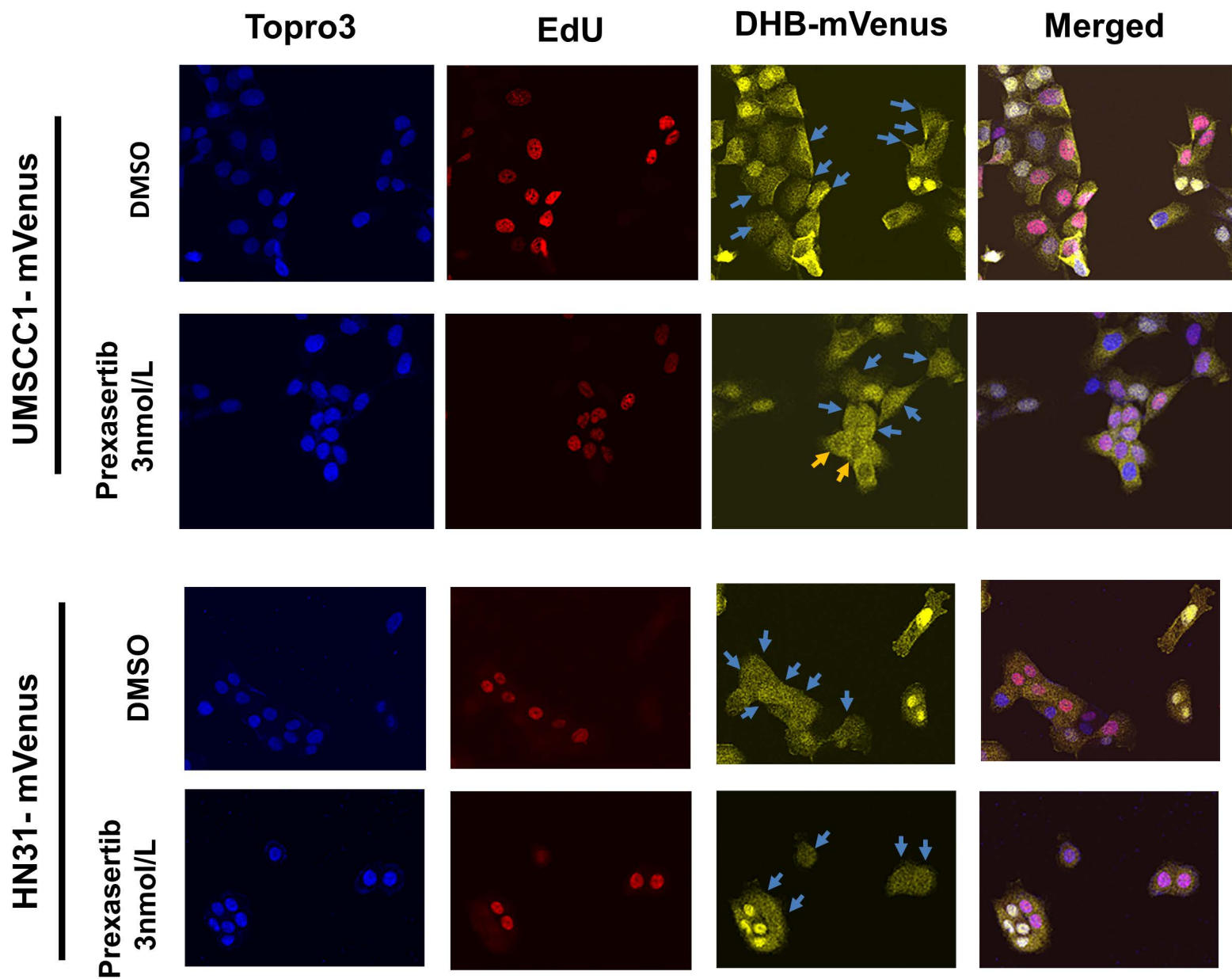


Supplementary Figure S4



Supplementary Figure S4. Chk1 inhibition selectively boosts cdk2 activity in hypersensitive cells

UMSCC1-mVenus and HN31-mVenus cells were treated with DMSO (0.1 %) or prexasertib (3 nmol/L) for 6hrs. Cells were pulsed with EdU for 1hr prior to the 6 hr time point. EdU positive cells were scored based on their DHB-mVenus staining pattern (nucleus only (N), cytoplasm only (C), cytoplasm and nucleus (C&N)) and the percentage of EdU positive cells with different staining pattern were plotted. Corresponding representative confocal microscopic images under each treatment are shown. Blue arrows point to cells with nucleus and cytoplasm (C & N) staining pattern. Orange arrows point to cells with cytoplasm only (C) staining pattern. Minimum of 300 cells were assessed under each group. Group comparisons were made using Chi-squared test; *, significantly lower than DMSO treated cells; **, significantly greater than DMSO treated cells; n.s, differences not statistically significant.