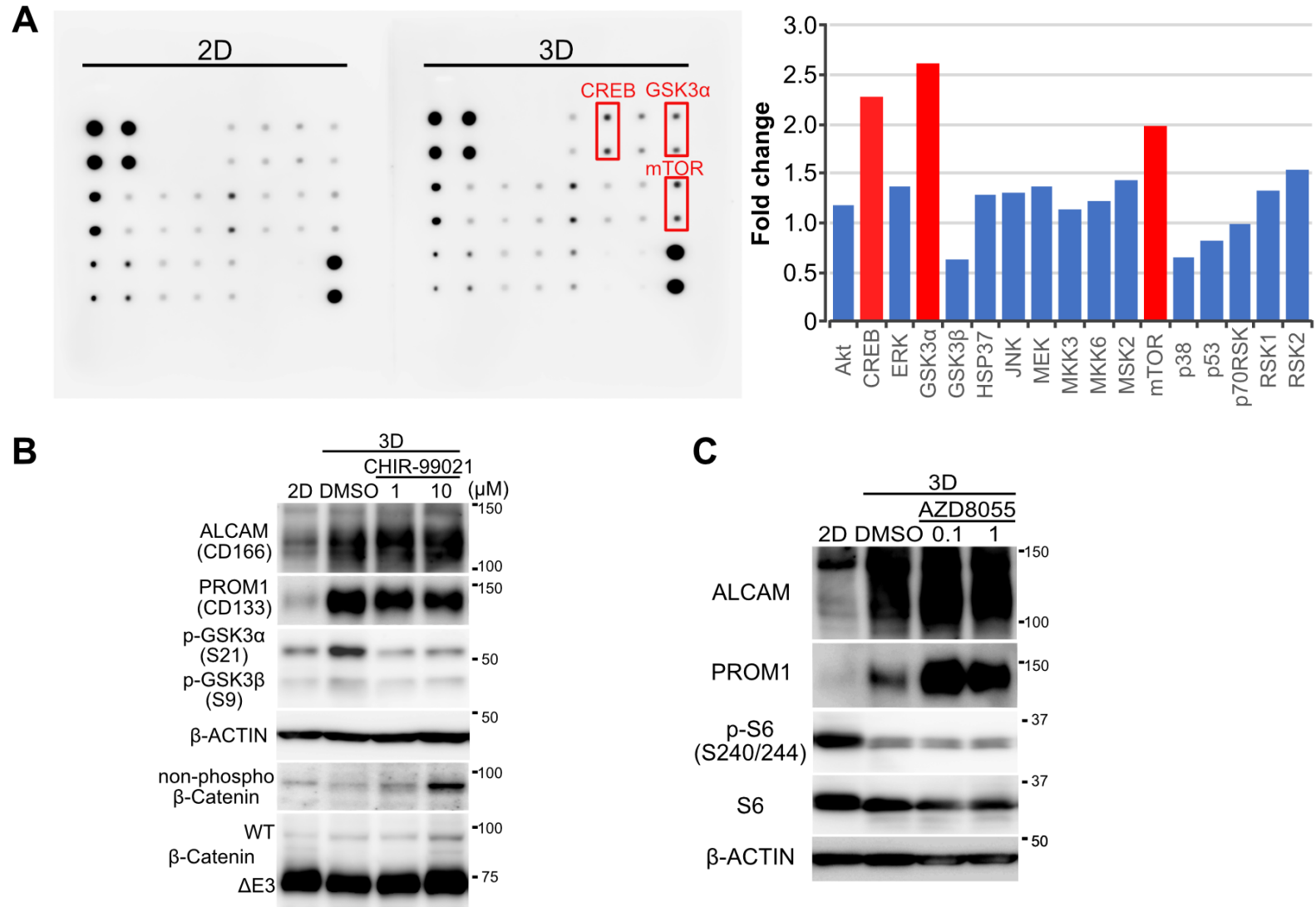


Supplementary Figure S8



Supplementary Figure S8. CREB phosphorylation in a spheroid culture of

CKPS cells and in clinical samples of metastatic CRC. (A) MAPK pathway phosphorylation array analysis of CKPS cells in 2D and 3D culture conditions. The bar graph shows fold changes in phosphorylation. (B) Western blots of ALCAM, PROM1, non-phospho-β-catenin, and β-catenin in 2D- and 3D-cultured CKPS cells treated with or without the GSK3 inhibitor CHIR-99021 for 24 h. (C)

Western blots of ALCAM, PROM1, phospho-S6, and S6 in 2D- and 3D-cultured CKPS cells treated with or without the mTOR inhibitor AZD8055 for 24 h.