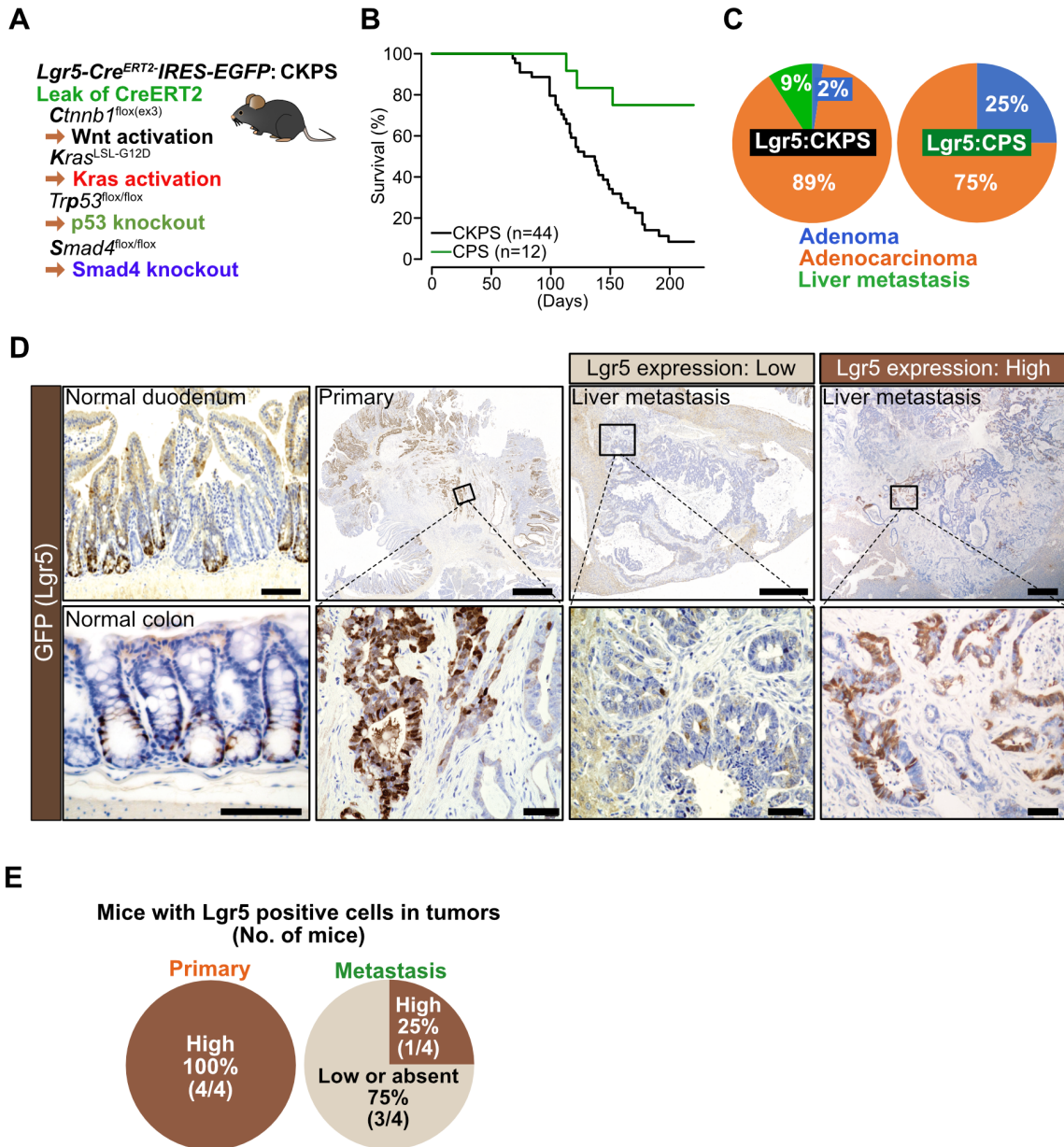


Supplementary Figure S6



Supplementary Figure S6. Spontaneous activation of Lgr5-driven CreERT2 also induces intestinal adenocarcinomas that metastasize to the liver in CKPS mice. (A) Schematic description of another spontaneous metastasis model of intestinal tumors induced by spontaneous activation of Lgr5-CreERT2. (B) Kaplan-Meier survival curves of Lgr5-CreERT2:CKPS mice and Lgr5-CreERT2:CPS mice. (C) Pie chart showing incidence of intestinal tumors in

Lgr5-CreERT2:CKPS and Lgr5-CreERT2:CPS mice, classified based on the most advanced tumors in each mouse (adenoma, locally invasive adenocarcinoma, or liver metastasis). (D) Immunostaining of GFP as a surrogate for Lgr5 expression in representative primary tumors and liver metastases of Lgr5-Cre:CKPS mice. Scale bars: 100 μm for the left-most panels, 500 μm for three panels from the right on top row, and 50 μm for three panels from the right on bottom row. (E) Pie charts for the intensity of GFP (Lgr5) staining in primary tumors and metastases of Lgr5-CreERT2:CKPS mice. High, clearly stained cells in glandular structures. Low or absent, intensity of staining similar to background.