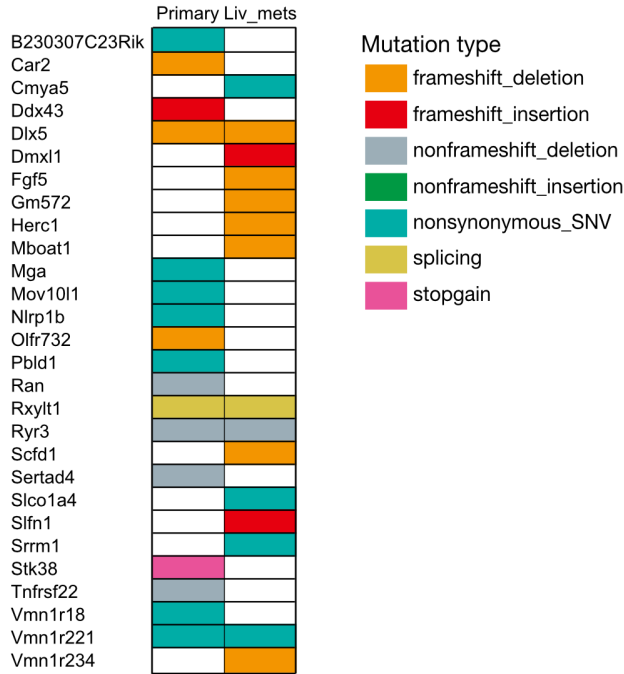
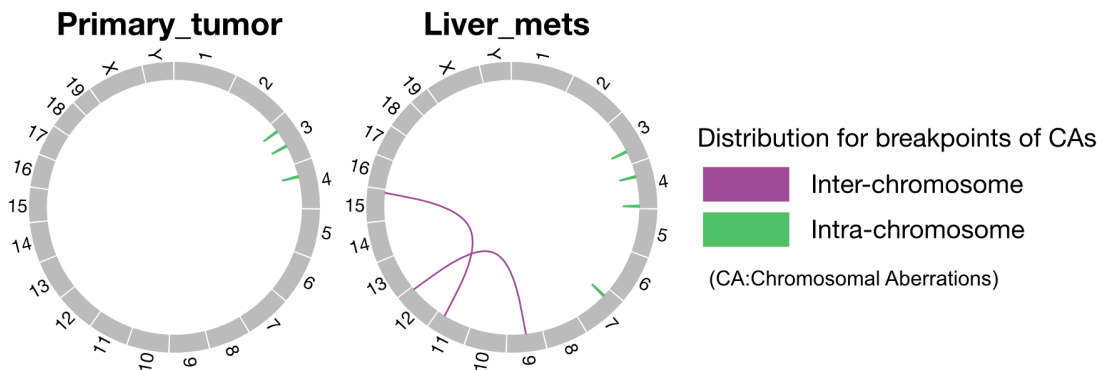


A



B



Supplementary Figure S4. Gene mutations and chromosomal breakpoints

identified in primary tumors and liver metastases of CKPS mice. (A) List of gene mutations in a primary cecal tumor and liver metastasis of CKPS mice identified by exome analysis. **(B)** Distribution of chromosomal breakpoints in a primary cecal tumor and liver metastases of CKPS mice identified by exome analysis.