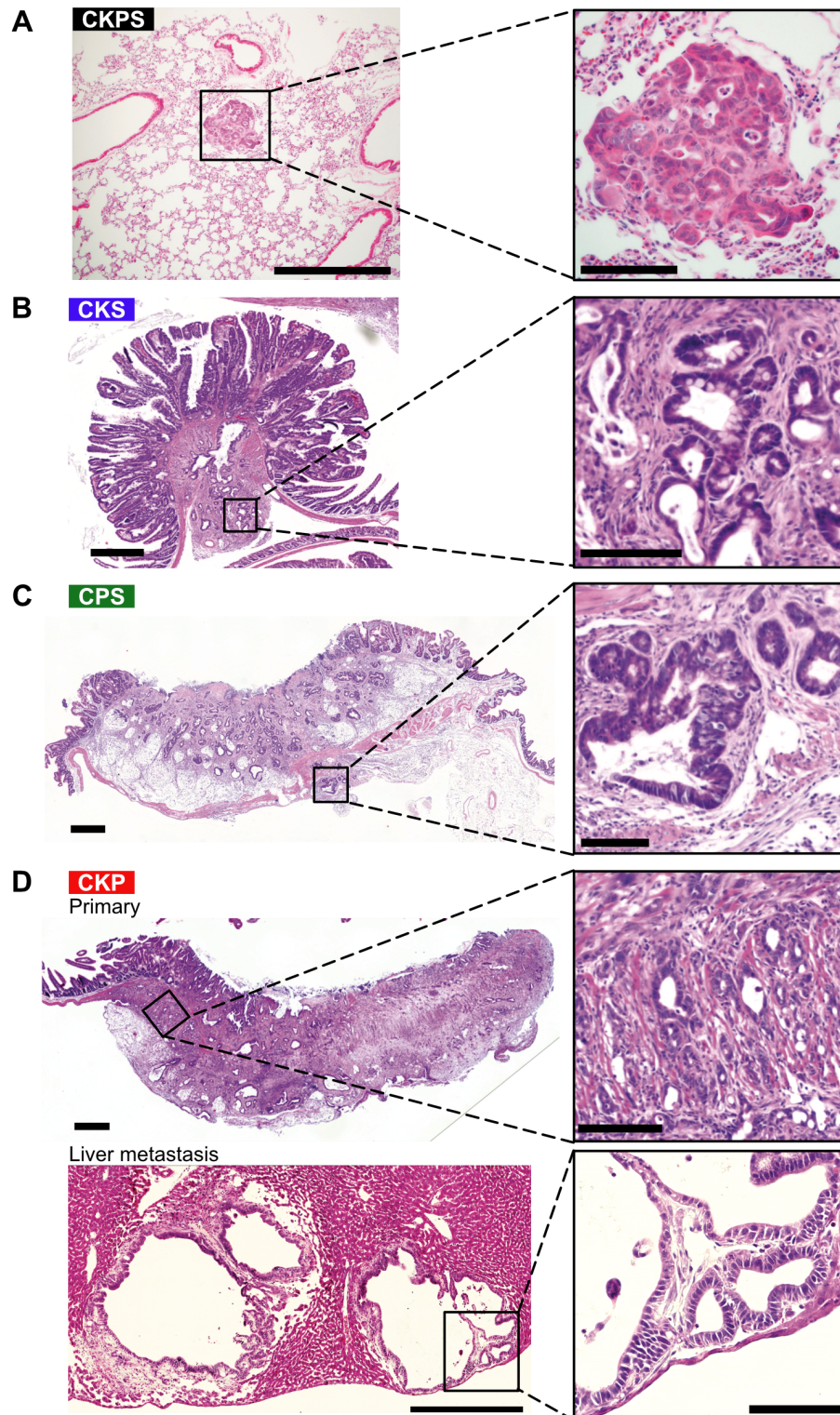


Supplementary Figure S2



Supplementary Figure S2. Representative HE-staining of intestinal adenocarcinomas in CKS, CPS, and CKP mice, liver metastases in CKP

mice, and lung metastases in CKPS mice. (A) A lung metastatic focus derived from colon adenocarcinoma in a CKPS mouse. (B) Jejunal adenocarcinoma of a CKS mouse. (C) Cecal adenocarcinoma of a CPS mouse. (D) Primary duodenal adenocarcinoma (upper panels) and its metastatic foci in the liver (lower panels) of a CKP mouse. Right panels are enlarged images of the framed areas in left panels. Scale bars: 500 μm for left panels and 100 μm for right panels.