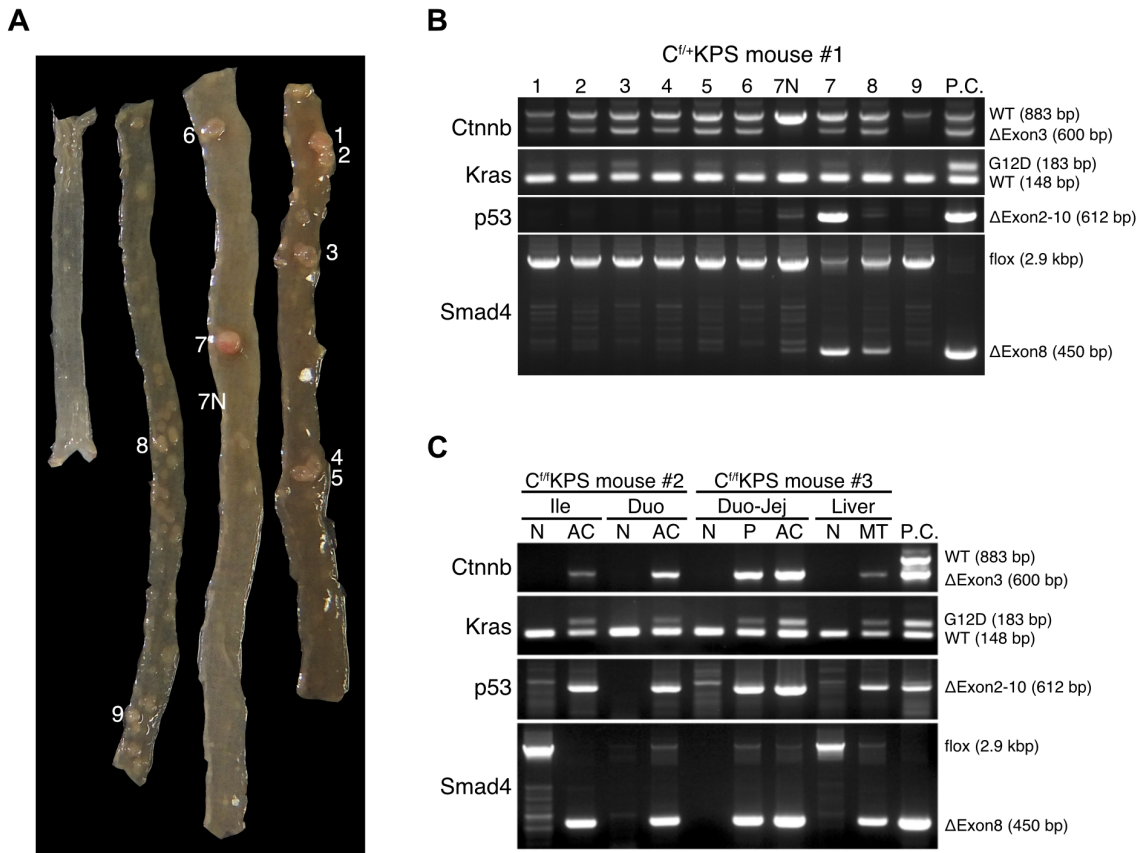


Supplementary Figure S1



Supplementary Figure S1. Genotyping analysis of CKPS tumors. (A) A photograph of the intestines of a CKPS mouse (#1). (B) Genotyping analysis of intestinal tumors in CKPS mouse #1. Numbers indicate individual tumors shown in (A) except 7N (normal mucosa). (C) Genotyping analysis of small polyps (P), large adenocarcinomas (AC), and liver metastasis (MT) in CKPS mice. P.C., positive control.