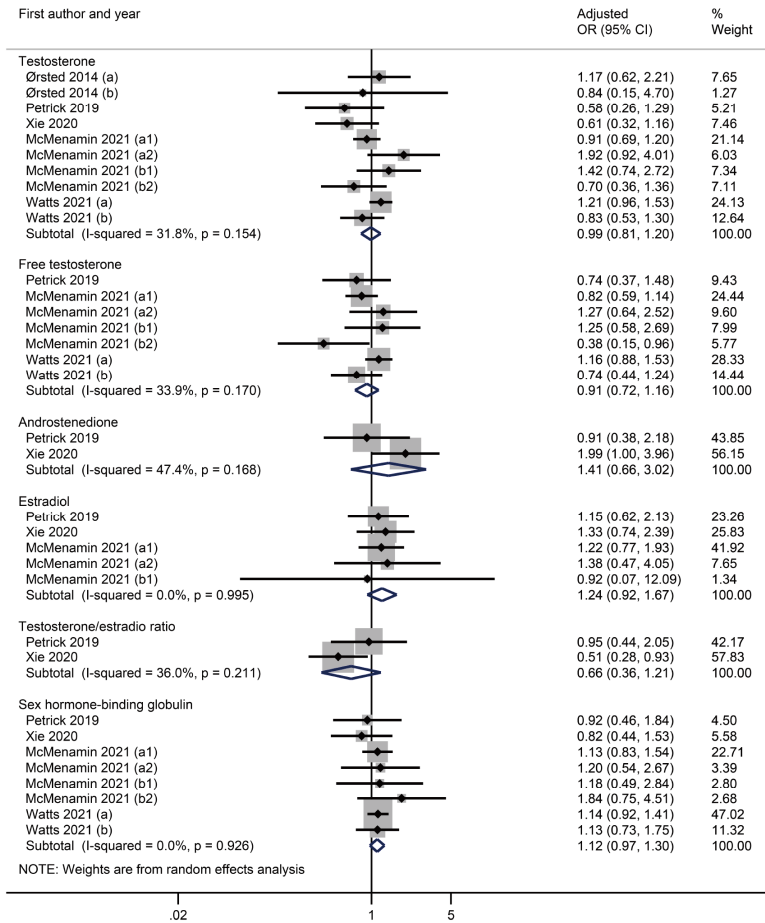
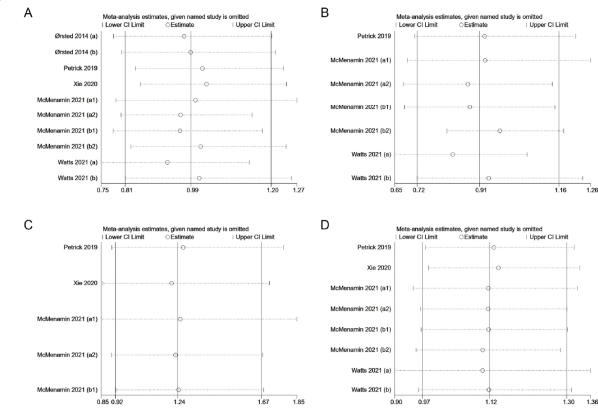


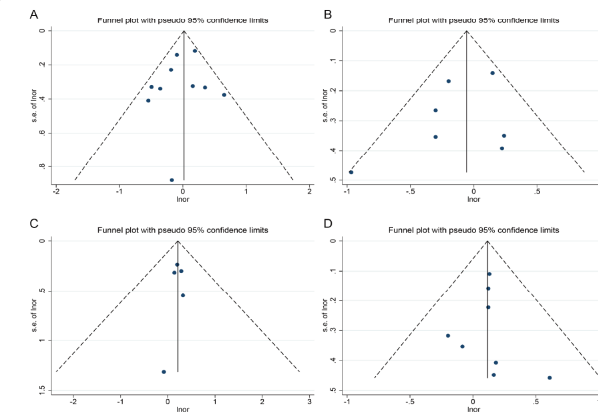
(1)



(2)



(3)



**Supplementary Figure S1. Forest plots (1), sensitivity analysis (2) and funnel plots (3) of the associations between prediagnostic circulating sex hormone levels and esophageal cancer risk. (a) male; (a1) male, adenocarcinoma; (a2) male, squamous cell carcinoma; (b) female; (b1) postmenopausal women, adenocarcinoma; (b2) postmenopausal women, squamous cell carcinoma. (A) testosterone; (B) free testosterone; (C) estradiol; (D) sex hormone-binding globulin.**