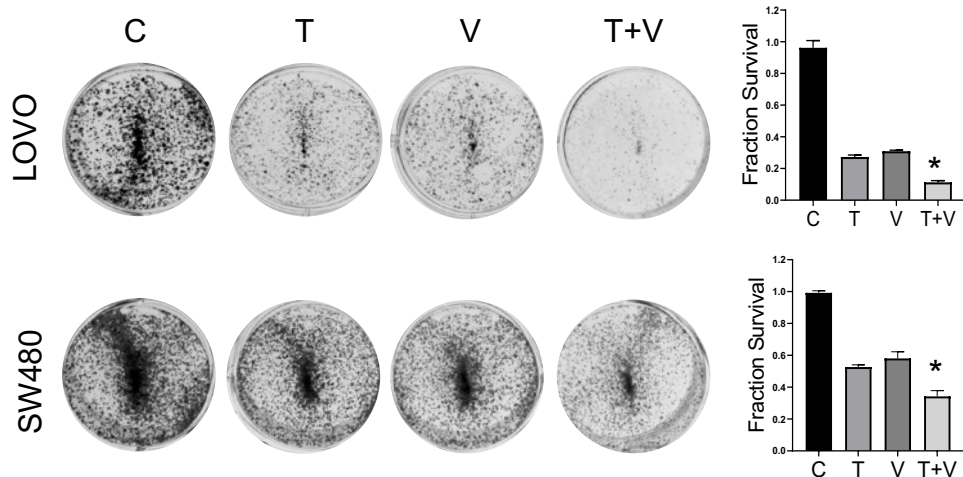
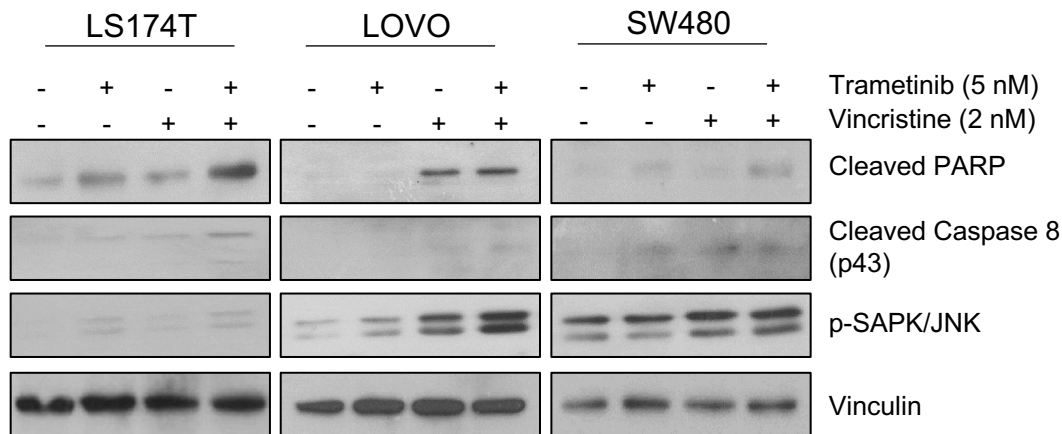


**A****B**

**Supplementary Figure 1: Combination of trametinib and vincristine is synergistic in multiple KRAS-mutant CRC cell lines and enhances apoptotic cell death.**

(A) Colony formation assays showing synergy of the combination of trametinib (T) and vincristine (V) in KRAS-mutant LoVo and SW480 CRC cell lines. Right: Representative images of methylene blue–stained colonies. Left: Plots showing fraction of surviving cells based on optical density measurement of methylene blue absorbed by CRC cells. C, untreated control. All data are presented as mean  $\pm$  SEM. \* $P < 0.05$  compared to control or single agents, Student *t*-test. (B) Representative western blots showing protein levels of markers of apoptosis (cleaved PARP, cleaved caspase 8, p-SAPK/JNK) in LS174T, LoVo, and SW480 CRC cell lines treated with trametinib, vincristine, or a combination.