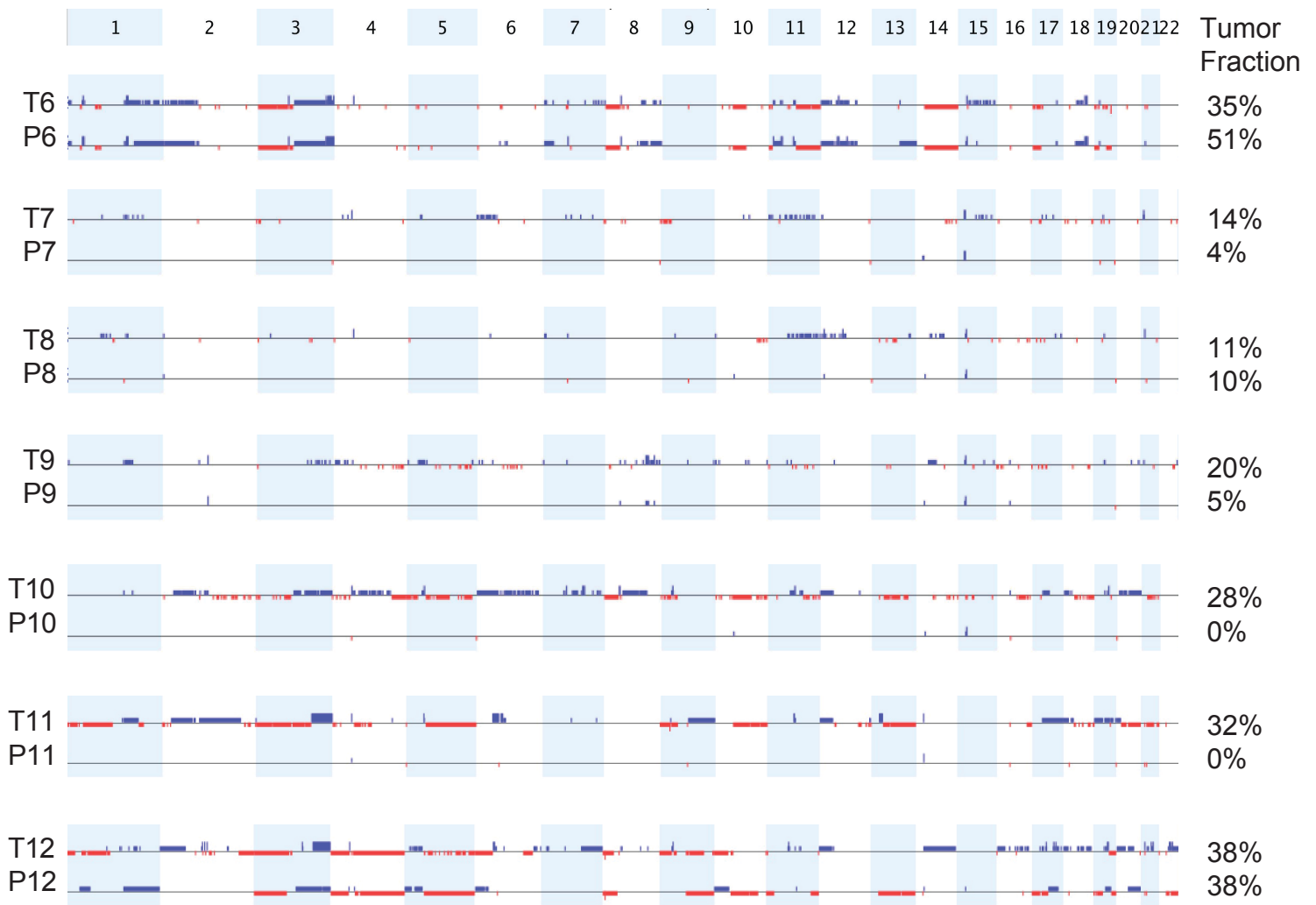
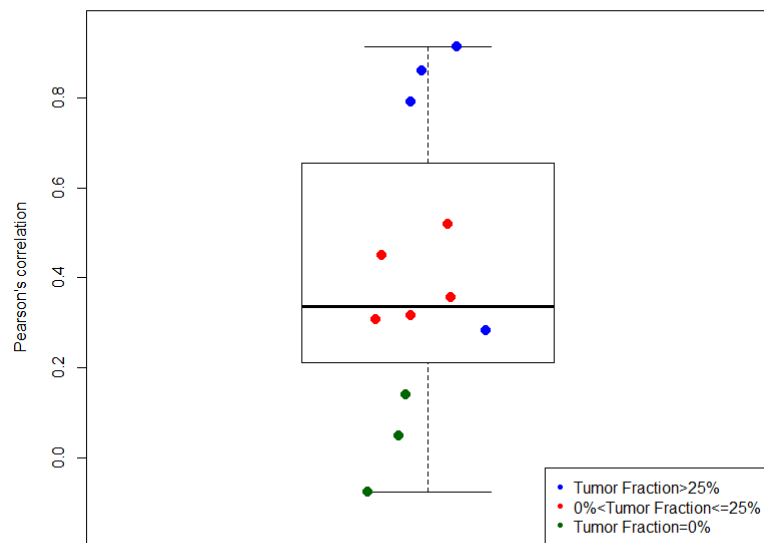
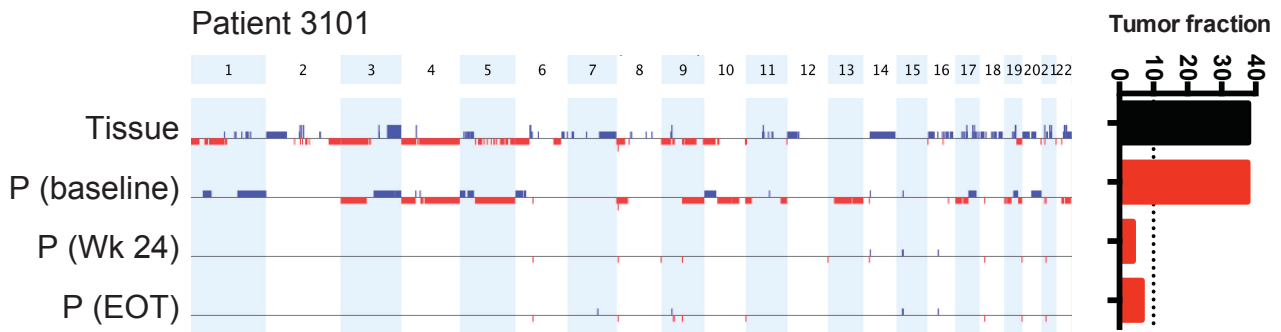
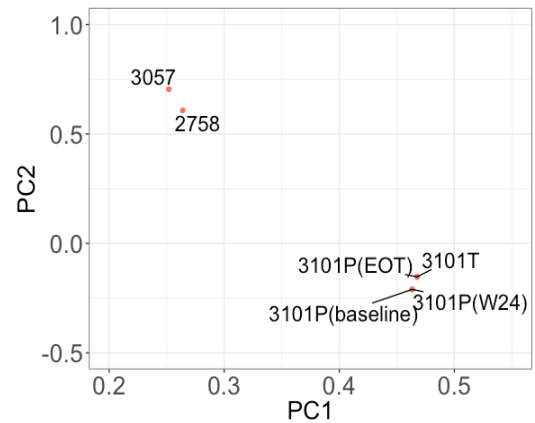


A**B**

C**D**

Samples	Correlation to 3101P (baseline)
3101P (Wk24)	0.97
3101P (EOT)	0.95
3101 Tissue	0.95
3057P	0.41
2758P	0.38

E**Figure 4S.**

Comparison of CNV landscapes in tumor tissue and cfDNA of the FIGARO squamous NSCLC patients. **A**, Representative LP-WGS profiles of archival tissue (T6-T12) and matched baseline cfDNA (P6-P12). Blue, copy number gain; red, copy number loss. Estimated tumor fraction indicated for each sample. **B**, Pearson correlation values for all 12 plasma and tissue pairs, color coded by cfDNA tumor fraction. Plasma tumor pair number 12 (patient 3101) has plasma tumor fraction >25% but low Pearson correlation. **C**, CNV landscape of patient 3101 tissue and plasma at baseline, week 24 (Wk24), and end of treatment (EOT). **(D-E)** Single nucleotide polymorphism (SNP) genotyping confirmed that tissue and plasma came from the same patient. cfDNA from two different patients included for comparison. **D**, correlation scores. **E**, Principal Component Analysis (PCA) score plot.