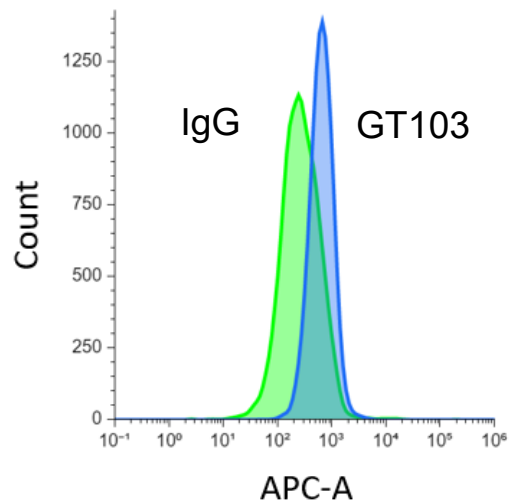
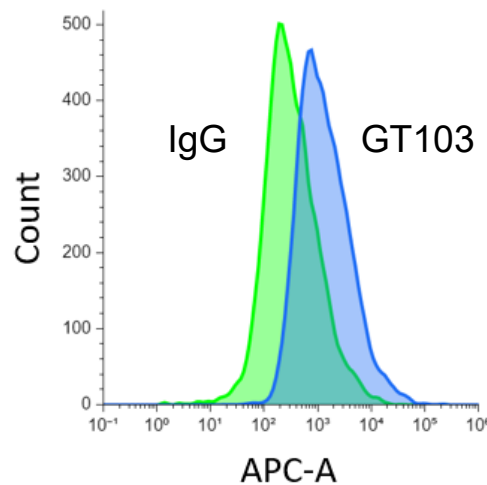


**C3b/iC3b
binding**

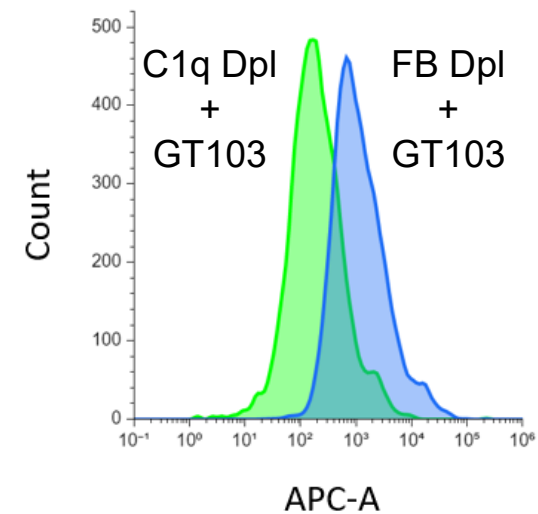
**Fig 3A: A549 cells +
GT103 vs. IgG in NHS**



**Fig 3B: H460 cells +
GT103 vs. IgG in NHS**

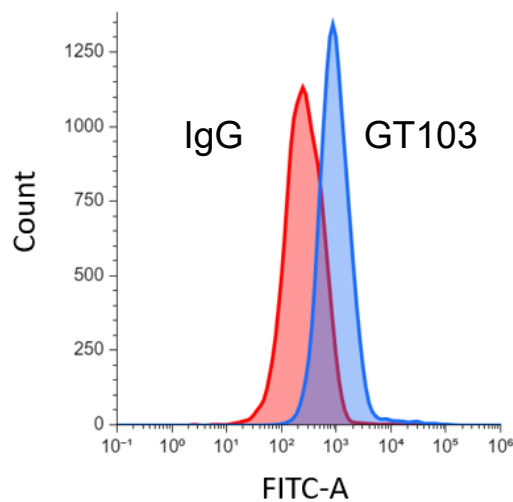


**Fig 3B: H60 cells + GT103 in
C1q vs. Factor B depleted NHS**



**C1q
binding**

**Fig 3C: H460 cells +
GT103 vs. IgG in NHS**



**Fig 3C: H460 cells +
GT103 vs. F(ab')₂ in NHS**

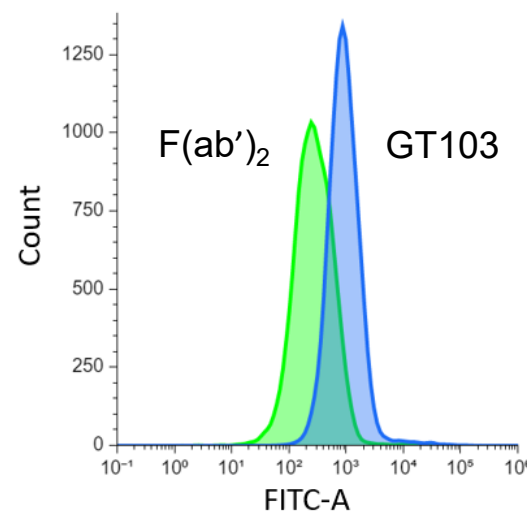


Figure S3. Flow cytometry histograms of C3b/iC3b or C1q binding to NSCLC cells incubated with normal human serum (NHS) or depleted (Dpl) NHS + antibodies. Antibodies are GT103, subtype-matched IgG, or F(ab')₂ of GT103. Homogeneous populations of tumor cells were gated to eliminate only debris. Key comparisons from the denoted parts of **Figure 3 are shown.**